

Society Sketchbook

February, 2020

Issue 41

DATES FOR YOUR DIARY

RONNIE IRELAND
Demo: Painting With an Open Mind in Acrylic
 28th January,
 2.30pm at The John Pearson Hall, St John's, Alresford.

RONNIE IRELAND
Workshop: Painting With an Open Mind in Acrylic
 Saturday 8th February,
 10-4 at The Christy Hall, Old Alresford.

GRAHAM COX
Demo: Landscapes and Seascapes in Pastel
 Tuesday 25th February
 2.30pm at The John Pearson Hall, St John's, Alresford.

GRAHAM COX
Workshop: Landscapes and Seascapes in Pastel
 Saturday 7th March,
 10-4 at The Christy Hall, Old Alresford.

GEOFF HUNT
Demo: By the Waterside in Watercolours
 Tuesday 31st March,
 7.30pm at The John Pearson Hall, St John's, Alresford.

STEPHEN FOSTER
Demo: Semi-abstract
 Tuesday 28th April,
 7.30pm at The John Pearson Hall, St John's, Alresford.

AGM & SPEAKER
Dr Anne Anderson
The Glasgow Boys, Realism & Impressionism
 Tuesday 26th May
 7.30pm at The John Pearson Hall, St John's, Alresford.

PLANNING FOR WARMER DAYS

Our Programme Secretaries Sue and Richard Cox are already planning our outings for the summer and one of the highlights will undoubtedly be a visit to Houghton Lodge.

This Grade II* listed fishing lodge on the River Test was built c.1800, possibly by John Nash for the Pitt-Rivers family in a picturesque Gothic style known as Ornée.

Another popular venue will be St Cross Hospital, founded in the 12thC. Back by popular demand, it is a wonderful place to spend the day. Also arranged are visits to the Longwood estate where we can promise you lots of animals, old buildings and architectural features and Cheriton Cottage (not a cottage!). This house enjoys the River Itchen running through and there should be horses to be painted.



Houghton Lodge on the Test

Artists and speakers for the 2020/21 programme include Joel Wareing, who will be demonstrating figures in acrylics; Alison Board will be doing animals in mixed media, Jonathan Newey architecture in acrylics, Chris Forsey mixed media in Venice, and Anne Chadwick autumn in pastels.
 Continued on page 3.

GO TO PAGE 4
 FOR MORE INFORMATION ON OUR JANUARY, FEBRUARY, MARCH AND APRIL MEETINGS.

Please note that January and February meetings start at 2.30pm.

95 NOT OUT



Jill Jennings, finding her niche at 95.

Jill Jennings is a very modern ninety-five year old who paints as often as she can, both in her studio and outside in the summer months, exhibiting her work at least three times a year.

She has been a member of the Alresford Art Society since 1995, having arrived in the town the previous year, and was a member of the committee and Treasurer for nine years. Cont. on p2

95 NOT OUT cont.

Jill has also been a member of the New Road Artists (formerly Timsbury Modern Painters) since that time. She lives in the centre of Alresford and has always painted in an abstract way and in recent years has developed a very recognisable style in mixed media. She creates collages based on the rocks of her beloved Guernsey, taking the initial shapes and planes that she sees, using them to create images of great depth.

Born and raised in Adelaide, Jill trained as a thoracic physiotherapist. In 1951 she achieved her life-long dream of visiting the UK to visit relations in Guernsey - her father, who was vice-captain of the Australian test cricket team which visited England in 1912, had a sister who had married a Guernseyman. Sadly her uncle had died during the German occupation, and Jill's aunt died while she was enroute to the UK, but her cousins still live there. During this first visit Jill took the opportunity to further her career by taking short-term jobs at the Harefield and Brompton Hospitals which were the leading lights in those early days of thoracic surgery.

Back in Australia for a couple of years Jill took the decision to return to the UK with a view, possibly of remaining and she was lucky enough to get a part-time job at the Brompton Hospital again. Towards the end of the fifties she decided that she did not want to continue her career in physio and a chance meeting with a BBC TV newsreader led to a job at Broadcasting House, where she came across some of the radio celebrities of the day. From then on she had a variety of jobs, including two years in a Mayfair art gallery, interspersed with visits to Australia, until she retired. She also took a course in History of Art at London University and was able to spend more time painting.

Jill tries to get back to the island twice a year and it was on one of her visits to St Peter Port that she attended a lecture given by Anthony Gormley. He was on the island to supervise the installation of his *Insiders* cast iron sculptures on Castle Cornet and she bumped into him the next day while out sketching. To Jill's delight he invited her to sit with him and they discussed his work at length.

"My Mother was a good watercolourist and I've painted since I was a child," says Jill. "After I stopped being a physio I did contemplate going to art school, but lost my nerve. I would paint every day if I could and now feel that I have found my niche and will continue as long as I'm able to pick up a pen or paintbrush."

Jill will be exhibiting her paintings with the New Road Artists at the Hillier Arboretum in June and at the Art Society exhibition in July.

TERRIFIC TREVOR

Trevor Waugh was a great success both at our September meeting as a demonstrator and later at his follow up workshop.

I think it was safe to say that nobody wanted to go home after his demo, he was so entertaining. A real character, he works in an impressionistic, loose artistic style that brings light and life to his chosen subjects. He has published three successful books on painting with watercolour and you can see his work at www.trevorwaugh.com. His Venetian street scene in watercolour was a classic and if you missed him do look up his demos on [youtube](https://www.youtube.com).



150TH ANNIVERSARY

The Art Society took part in celebrating the 150th Anniversary of the Avenue being gifted to Alresford by the then Bishop of Winchester.

We joined numerous other organisations in the town in a tented village, displaying our wares with a new set of panels covering the history of the Art Society and our activities today. Robin Moore set up his easel and answered questions about painting techniques while visitors looked over his shoulder as he worked on a landscape and Jen Boardman gamely painted portraits of those that were prepared to sit still for ten minutes.



PLANNING AHEAD

Back by popular demand will be Oliver Pyle who will be showing us how to create pure reflections in watercolour and both he, Joel, Alison and Anne will be running workshops. Max Hale is another returnee who will be showing us drawing techniques.

Speakers will include Douglas Skeggs on David Hockney and Scott Anderson on Klimt.

SORAYA SPARKLES

As always Soraya French stimulated us with her bright and breezy mixed media demo of a still life. At her workshop members pulled out all the stops to create colourful artwork bringing their own assortment of fruit, flowers and containers.



A Warm Welcome to new members

Zoe Cotton, Tony Rose, Olivia Osorio, Caroline Westley, Irene Spencer and Anthony Salzman

YOUR SUBS

Do you pay by standing order? If so, you need to make sure that on the 1st April, you are paying the correct amount - that is £15.

If you don't pay by standing order it would be extremely helpful if you could set up this method of payment before the end of March as it stops us chasing you every year. Please download a form from www.artsociety.alresford.org or pick one up at a members' meeting.

Subs are due on 1st April each year so please don't set up a Standing Order to leave your account before that date.

CLASSES LATEST

All classes are at the Christy Hall, Old Alresford.

LIFE CLASSES with models tutored by Karen Popham, six weeks from Tuesday 4th February, 4-6pm, no class on 25th February. Course fee £80, places available.

THURSDAY WATERCOLOURS with Christopher Cole from 10-12.30pm, fee £80. Ten weeks from 16th January but no class on 20th February, places available.

OIL CLASSES with Karen Popham will run on Mondays for nine weeks from 3rd February, 3-6pm, no half term break. Class fee £99, waiting list only.

FRIDAY WATERCOLOURS with Sharon Hurst and Lindsey Cole from 10-12.30pm, for 10 weeks from 17th January. Class fee £75, one place available.

BEGINNERS CLASSES with Graham Marsden, 2-4pm Thursdays for eight weeks, waiting list only.

MONDAY EVENING WATERCOLOURS with Sharon Hurst, 8-10pm, starts 27th January for seven weeks £70.

For availability call Sue Gentry on 01962 773185 or email sue.gentry@gentrypublicity.co.uk.

BOOK YOUR WORKSHOP NOW

Places are available on a first come first served basis on receipt of payment. Final details will be issued nearer the time.



I wish to attend:

RONNIE IRELAND - 8th February

Painting with an Open
Mind in acrylic

GRAHAM COX - 7th March
Landscapes & Seascapes in pastel

NAME

(please print clearly)

ADDRESS

.....

TELEPHONE

EMAIL

Please return with SEPARATE cheques for £35 (dated the day of the workshop) payable to the Alresford Art Society to Maddie Attenborough, Itchen Mead, New Farm Road, Alresford SO24 9QH.

If paying by BACS: Lloyds Bank, Sort Code 30-64-72, Account No. 31331268.

If paying by BACS PLEASE ENSURE that you give the artist's name as the reference. Any queries call 01962 733605 or email maddieattenborough@gmail.com.

JANUARY DEMO

Ronnie Ireland will join us on Tuesday 28th January at 2.30pm at the John Pearson Hall to demonstrate Painting with an Open Mind in Acrylic.

Born and educated in Glasgow, Ronnie studied at the Glasgow School of Art. He says, "Whatever the style or subject my work always investigates identity, inviting the viewer to develop their own thoughts, feelings and narrative." His workshop follows on 8th February and you can book your place using the form on page 3.



MARCH MEETING

Geoff Hunt will be working on a Waterside in Watercolours at our meeting on Tuesday 31st March at 7.30pm at the John Pearson Hall.

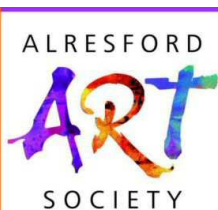
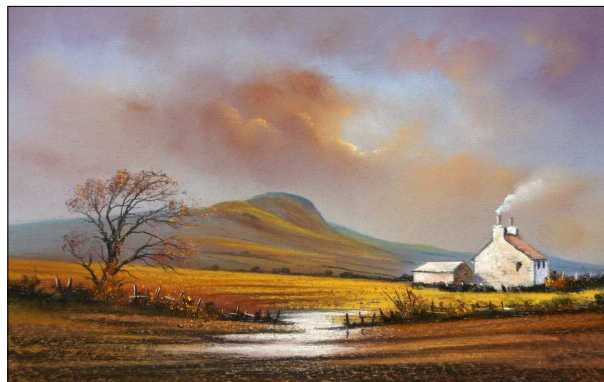


Geoff is a former President of the Royal Society of Marine Artists and is now Chair of the Wapping Group. He has been contributing an excellent monthly diary in The Artist magazine on all the ups and down of painting en plein air.

FEBRUARY MEETING

Graham Cox will tackle Landscapes and Seascapes in Pastel on Tuesday 25th February at 2.30pm at the John Pearson Hall.

Born and raised in Bath, Graham left school at 16 to join the Royal Navy, where he specialised in telecomms. His boyhood love of painting was revived after seeing an episode of Art Works with David Bellamy in 1994. He confessed he spent the next few months producing more mud than magic before discovering pastels and soon found he could create the evocative moody views which he has become so well known for.



You can book for Graham's workshop on 7th March using the form overleaf.

APRIL DEMO

Stephen Foster will show us his semi-abstract Landscape Painting in oils and acrylics on Tuesday 28th April at 7.30pm at the John Pearson Hall.



Sun on Wide River

"My aims are simple," says

Stephen, "realism is not enough. I want to paint as intensely and expressively as possible.

"When painting I look for accidents and random events which can make the painted surface more evocative and exciting. It is through these chance events that deeper meanings can reveal themselves and a painting can come to mean more than expected. For me a painting cannot really come to life without these chance events." He studied History and Art History at university but found painting to be more interesting.

Email: art_society@alresford.org www.artsociety.alresford.org

This newsletter is edited by Sue Gentry and printed by Sarsen Press.
Contact 01962 773185 or email sue.gentry@gentrypublicity.co.uk.